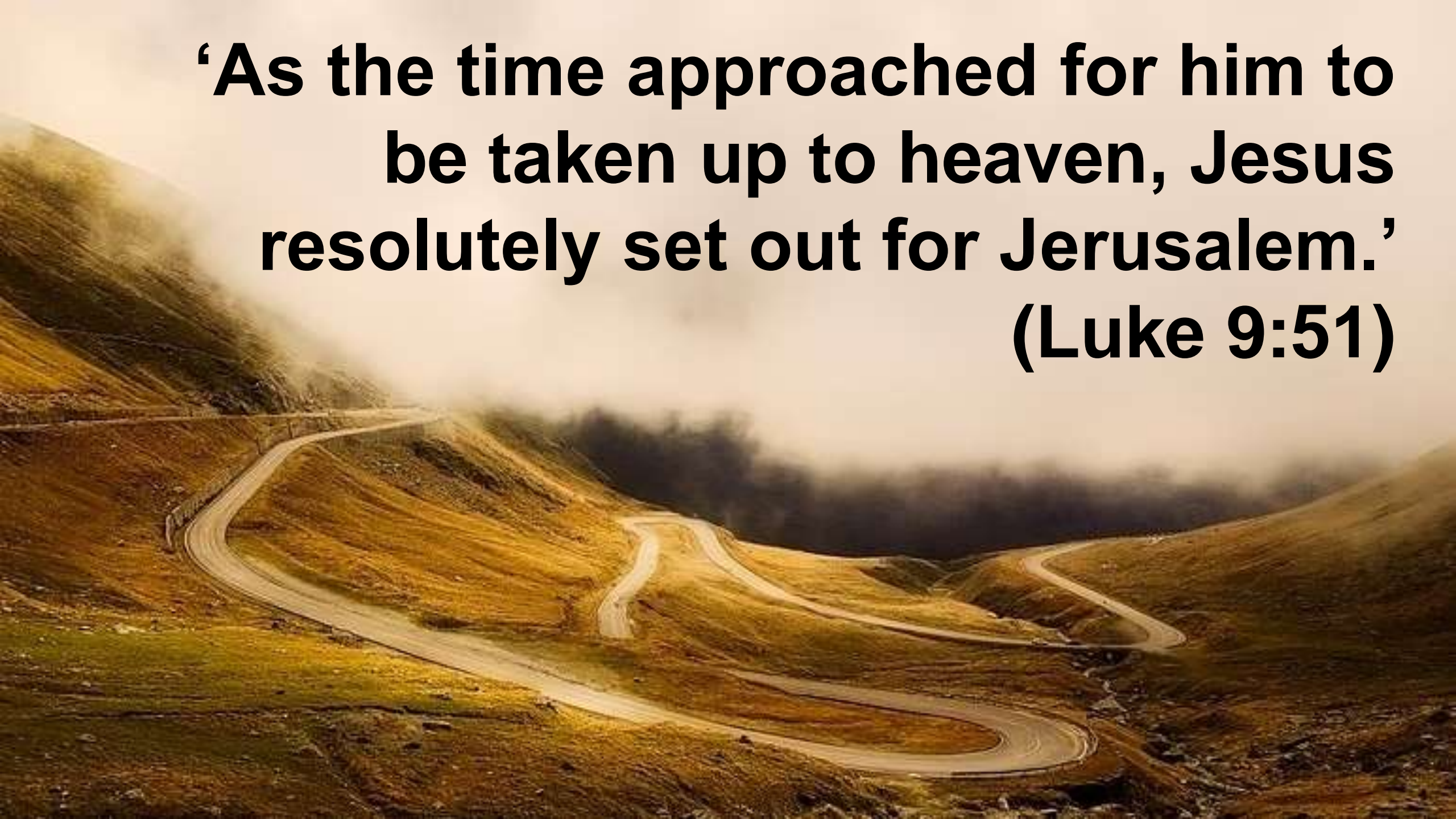


**‘As the time approached for him to
be taken up to heaven, Jesus
resolutely set out for Jerusalem.’
(Luke 9:51)**





L₂ O₁ V₄ E

A red heart-shaped object, possibly a small toy or a piece of fabric, is placed to the right of the wooden blocks spelling 'LOVE'. The heart is positioned between the 'E' block and the right edge of the frame. The background is a blurred pattern of red and blue, and the surface the blocks are on is light-colored with some faint red heart shapes.

Ways to be a good neighbour:

- Sign up on the volunteer form to give assistance**
- Help deliver the Easter card**
- Call up others on phone**







Traditional recipes from our Indian chef

Easter

MUSLIM FOOD

We've price matched hundreds of products

Aldi Price Match

Just get the best price

£2.80 £2.80 £2.80 £2.80

£2 £2 £2 £2

£1 £1.98 £1.98 £1.98 £1.98

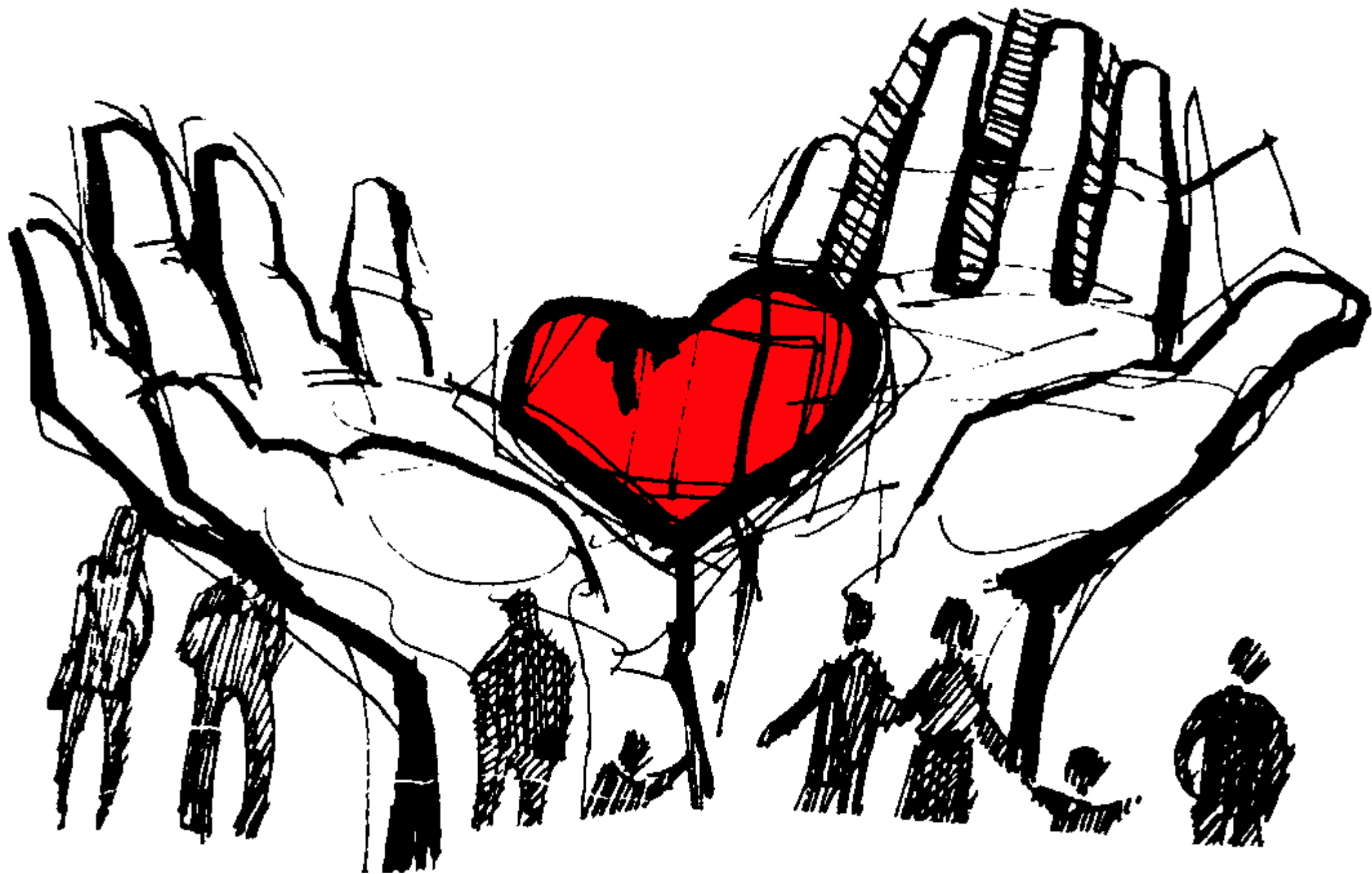
6p 6p 6p 6p

6p 6p 95p 6p

6p 6p 6p

ANTIDOTE

A graphic design featuring a red silhouette of a human head in profile, facing right. The word "ANTIDOTE" is written across the face in a bold, black, sans-serif font. The letters are thick and have a slightly irregular, hand-drawn appearance. The red silhouette has a textured, slightly grainy surface, and the overall composition is set against a plain white background.



**“...perfect love
drives out fear”
(1 John 4:18)**



LOVE GOD 
 LOVE OTHERS 